



# GMT MONTHLY MEMBERSHIP PROGRESS REPORT

Results as of: 5/31/2017

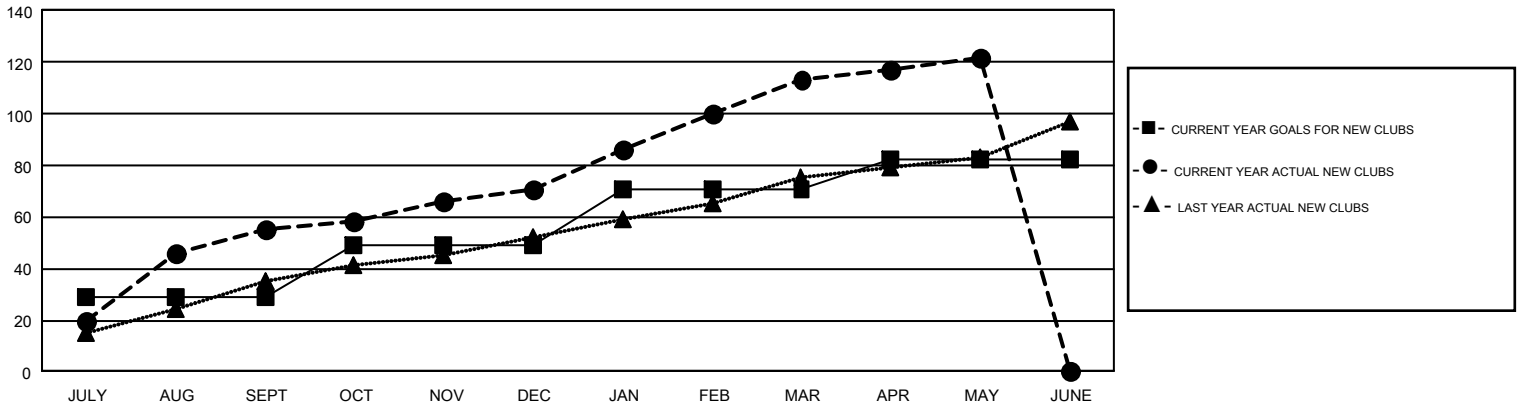
## GMT Constitutional Area 6, Group D

GMT: KAMLESH JAIN

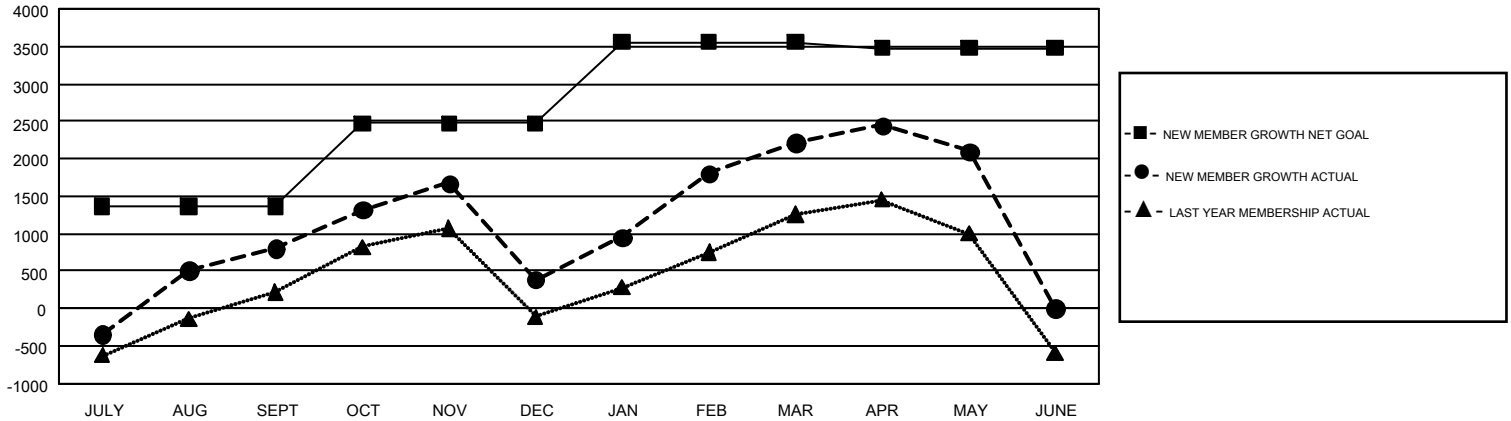
REPORT DOES NOT INCLUDE CLUBS IN UNDISTRICTED AREAS.

Clubs				Members			
RESULTS FOR 2016-2017				RESULTS FOR 2016-2017			
QUARTER	NEW CLUB GOAL	NEW CLUBS	DROPPED CLUBS	QUARTER	NEW MEMBER GROWTH NET GOAL (not reinstated or transfers)	NEW MEMBER GROWTH ACTUAL (not reinstated or transfers)	DROPPED MEMBERS ACTUAL (including transfers)
JULY/AUG/SEPT	29	55	11	JULY/AUG/SEPT	1,366	3,102	2,293
OCT/NOV/DEC	20	16	56	OCT/NOV/DEC	1,107	1,553	1,977
JAN/FEB/MAR	22	42	11	JAN/FEB/MAR	1,084	2,805	974
APR/MAY/JUNE	11	9	0	APR/MAY/JUNE	-82	923	1,040

GOALS AND ACTUAL NEW CLUBS CUMULATIVE



GOALS AND ACTUAL MEMBERS CUMULATIVE



DROPPED CLUBS: 78	993 CLUBS OF 1,522 ADDED 1 OR MORE NEW MEMBERS	<b>GENDER DISTRIBUTION</b> MALE                    40,925 (71.90%) FEMALE                   15,994 (28.10%)
<b>DROPPED MEMBERS</b> DECEASED                    131 CLUB CANCELLED            1,286 OTHER                            4,866 <hr/> TOTAL                            6,283	<a href="#">CLICK HERE FOR CUMULATIVE MEMBERSHIP DATA</a>	TOTAL FAMILY UNIT MEMBERS                    25,165  FAMILY MEMBERS PAYING HALF DUES                    14,220